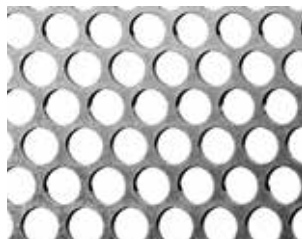


LAMIERE FORATE TONDE

Dimensioni 1000x2000 / 1250x2500 / 1500x3000
Foratura alternata 60°

NERI ZINC ALL

FORO ∅	SPESSORE									
	0,8	1	1,5	2	3	4	5	6	8	10
0,8	.									
1		.								
1,5		.	.							
2		.	.	.						
3						
4					
5				
6			
8		
10	
12		
15	
20		
30					.				.	.

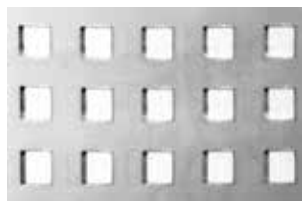


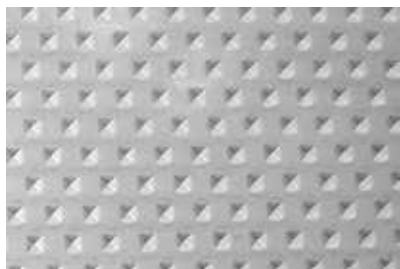
LAMIERE FORATE QUADRE

Dimensioni 1000x2000 / 1250x2500 / 1500x3000

NERI ZINC

FORO □	SPESSORE			
	1	1,5	2	3
5X5	.	.		
8X8	.	.	.	
10X10
15X15		.	.	
20X20		.	.	.
30X30			.	
40X40			.	
50X50			.	





MODELLO A 20/10

BUGNA 8X8
1000X2000



MODELLO B 20/10

BUGNA 12X12
1000X2000



MODELLO C 20/10

BUGNA 26X10
1000X2000



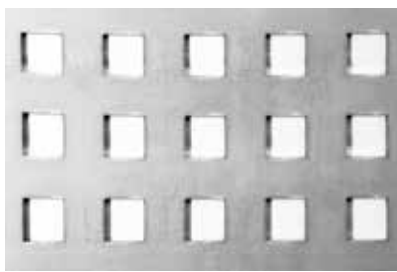
MODELLO D 20/10

BUGNA 38X14
1000x2000

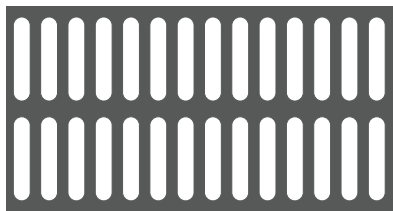


LAMIERA FORATA 15/10

FORO QUADRATO 20X20
PASSO 40 DECOR

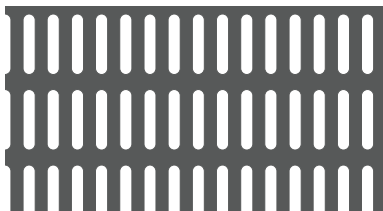


LAMIERA FORATA CON FORI GRANDI



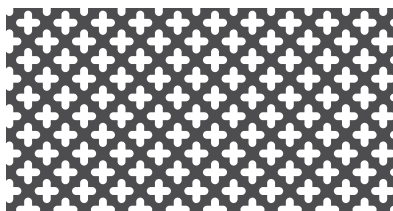
ASOLATE 15/10

ASOLA 40X8 - PASSO 13X47,5
1000X2000



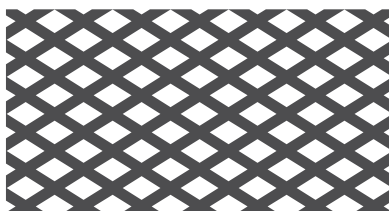
ASOLATE 15/10

ASOLA 20X5 - PASSO 10X25
1000X2000



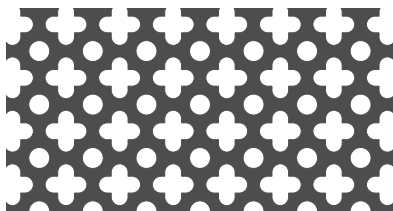
DISEGNO 501

FIORE 8 MM - SP 10/10
1000X2000



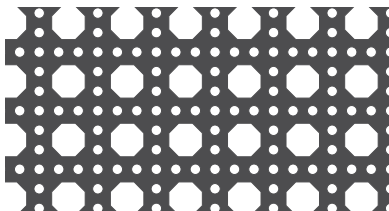
DISEGNO 504

SP 15/10
1000X2000



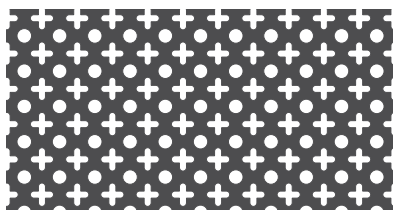
DISEGNO 505

FIORE 14 MM - C/FORI TONDI 7 - SP 10/10
1000X2000 - 1250X2500



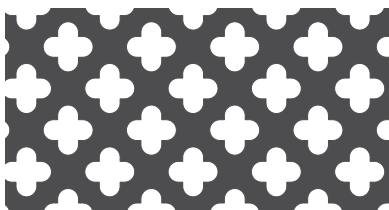
DISEGNO 508

SP 10/10
1000X2000



DISEGNO 513

FIORE 8 MM - C/FORI TONDI 5 - SP 10/10
1000X2000 ZINCATA - 1250X2500
ZINCATA



DISEGNO 561

FIORE 17 MM - SP 10/10
1000X2000

